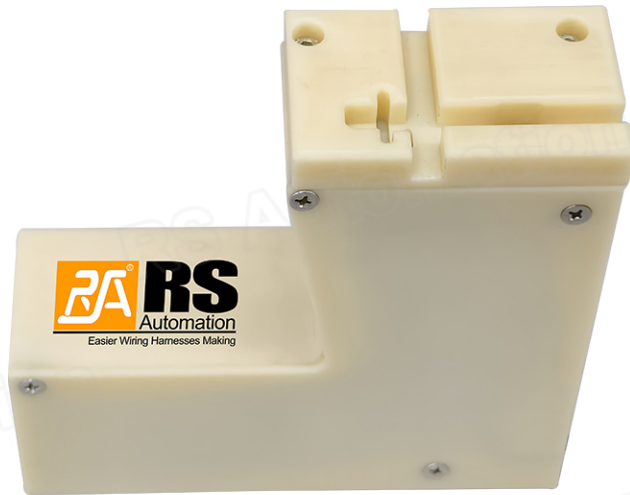


Fixed-type Cable Tie Strapping Machine

RSM-WT-09



Pull force is adjustable.

Feature

- ▶ Higher efficiency by combining cable tie hole inserting and tie tail cutting into one stop.
- ▶ Lower Cost. Save time and labor of inserting cable tie hole and cutting tie tail.
- ▶ Reduce the work fatigue of operator compared to the traditional cable tie processing.
- ▶ Compact design, applicable to multiple situations.
- ▶ Note: For optimal strapping results, use cable ties in prime condition (conditioned, unoxidized, within shelf life) and consume them within the same shift after opening. Unqualified ties are prone to breakage during strapping, affecting production efficiency.

Specification

Model	RSM-WT-09
Cable Tie Width	≤7mm
Cable Tie Thickness	0.8mm-1.6mm
Min. Bundle Size	Customized acc. to cable tie size
Max. Bundle Size	Customized acc. to cable tie size
Residual Length	Min. 2mm
Cycle Time	1sec per piece (cable tie length: 100mm)
Pull Force	20-100N (adjustable); Max.150N (running at this pull force may damage service life of machine)
Voltage	AC220V (single phase)
Power	30W
Air Source	No air source needed
Weight	2.5kg
Dimension	L150mm×W50mm×H140mm